

J. STEPHEN Co., Ltd.

The manual and product are protected by copyright.

MOBILE PRINTER

MODEL : LK-P SERIES

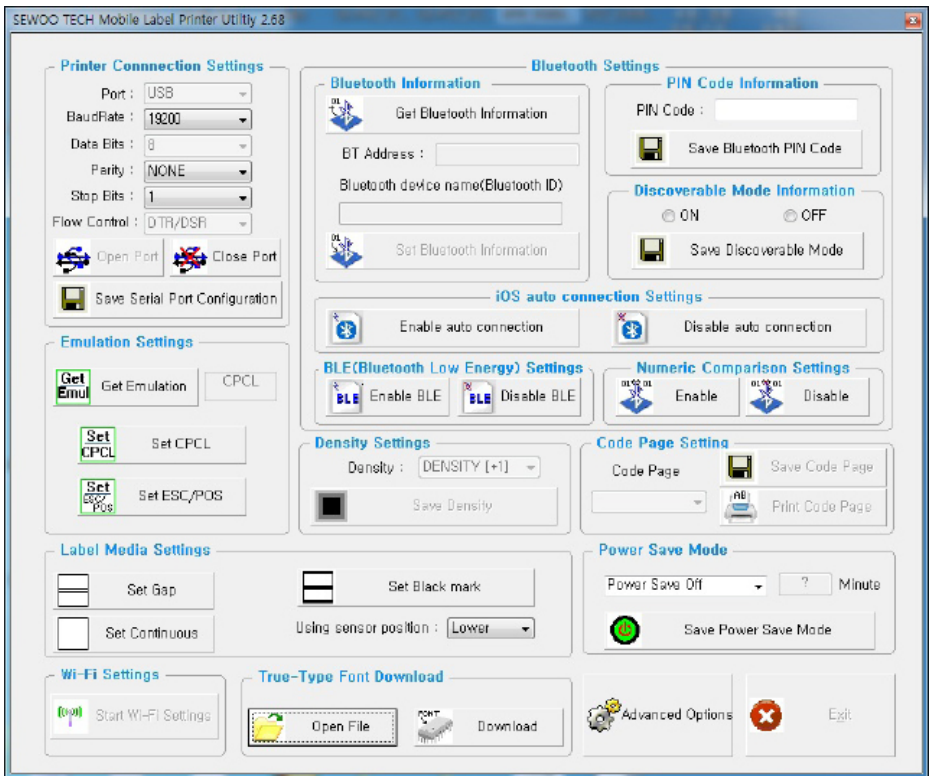


1. Instruction	3
2. Emulation Setting	4
3. Code Page Setting (ESC/POS Only)	5
4. Density Setting (ESC/POS Only)	6
5. Power Save Mode Setting	7
6. Label Media Setting(CPCL, ZPL, EPL Only)	8
7. Bluetooth Setting	9
7-1. Numeric Comparison Setting	11
8. NFC Setting	12
9. Wi-Fi Setting	13
10. True Type Font Downloading & Printing	16

You can change the configuration settings of your printer by using Configuration Tool Utility.

To configure the printer with Configuration Tool Utility.

1. Make sure that you have a PC running Windows XP or later.
2. Download Configuration Tool utility from the Sewoo website at (www.miniprinter.com).
3. Connect your printer to your PC using USB cable (Recommended).
4. Run the Configuration Tool utility.



5. Select the connection in the Printer Connection Settings.
6. Click the Open Port.
7. Click the button for the settings you want to configure.

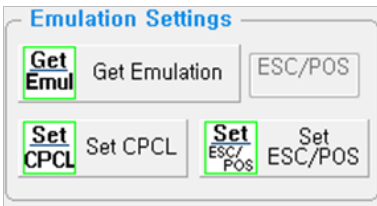
To configure Printer's Emulation with Configuration Tool Utility.

1. Click Get Emulation to check current emulation.

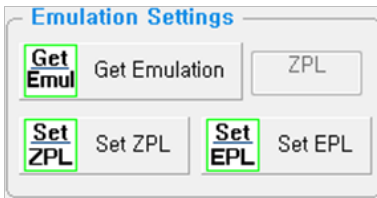


2. Update or check your settings.

- A. CPCL F/W (You can Select CPCL or ESC/POS)



- B. ZPL F/W (You can Select ZPL or EPL)



3. Click Emulation you want to use and wait for the beep and power off to finish.
4. Turn on the printer to use.

Use the following table to Printer's Emulation setting.

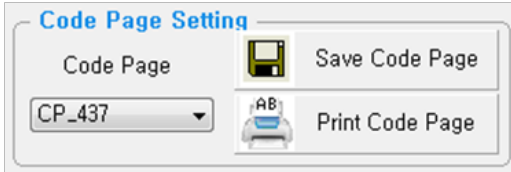
Model	Compatible Emulation
LK-P12(P12II)	ESC/POS, CPCL, ZPL
LK-P21	ESC/POS, CPCL, ZPL
LK-P22	ESC/POS, CPCL, ZPL
LK-P24	ESC/POS, CPCL, ZPL
LK-P25	ESC/POS
LK-P20(P20II)	ESC/POS, CPCL, ZPL
LK-P30(P30II)	ESC/POS, CPCL, ZPL
LK-P31	ESC/POS
LK-P32	ESC/POS, CPCL
LK-P34	ESC/POS, CPCL, ZPL
LK-P41	ESC/POS, CPCL
LK-P43(P43II)	ESC/POS, CPCL, ZPL

For more information, Please contact your supplier.

To configure Code Page settings with Configuration Tool Utility.

(Code page can be set by command in CPCL, ZPL)

1. Update or check the Code Page in the Code Page Setting.



2. Click Save Code Page to finish.
3. Click Print Code Page to test the printer is set correctly.

Use the following table to Code Page Settings.

Code Page	Description
CP_437	MS-DOS United States, Australia, New Zealand, South Africa
CP_737	MS-DOS Greek
CP_850	MS-DOS Latin-1
CP_852	MS-DOS Latin-2
CP_857	MS-DOS Turkish / Latin-5
CP_858	MS-DOS Multilingual / Latin-1 with euro symbol
CP_860	MS-DOS Portuguese
CP_862	MS-DOS Hebrew
CP_863	MS-DOS Canadian French
CP_864	MS-DOS Arabic
CP_865	MS-DOS Nordic / Danish / Norwegian
CP_866	MS-DOS Russian / Cyrillic
ISO_8859_2	Latin Alphabet No. 2
ISO_8859_9	Latin Alphabet No. 5(Turkish)
MAZOVIA	Polish
CP_1250	Windows Central Europe
CP_1251	Windows Cyrillic
CP_1252	Windows West European Latin 1
CP_1253	Windows Greek
CP_1254	Windows Turkish
CP_1257	Windows Baltic
CP_1258	Windows Vietnamese

To configure Density setting with Configuration Tool Utility.

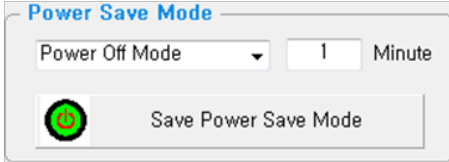
1. Update or check the Density in the Density Settings.



2. Click Save Density to finish.

To configure Power Save Mode setting with Configuration Tool Utility.

1. Update or check the Power Save Mode in the Power Save Mode.



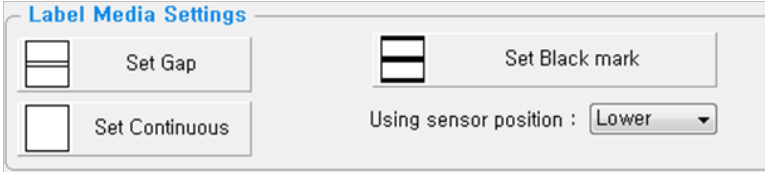
2. Click Save Power Save Mode to finish.

Use the following table to Printer's Emulation setting

Mode	Description
None Power Save	Set the mode to None Power Save.
Power Off Mode	Sets time interval between absence of printer use and automatic turning off of printer power.
Power Save Mode	Sets time interval for automatic entering into power saving mode while the printer is in use.

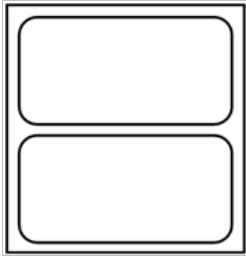
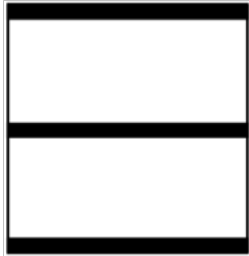
To configure Label Media Type setting with Configuration Tool Utility.

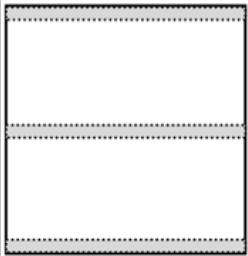
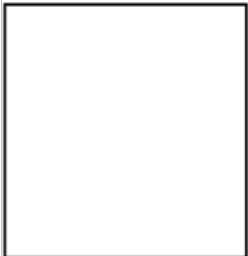
1. Update or check the Label Media Settings in the Label Media Setting.



2. Select Sensor position and Click Media type (Gap or Black Mark or Continuous) to finish.

Use the following table to Label Media setting.

Type	Gap	Black Mark(Lower)
Description		

Type	Black Mark(Upper)	Continuous
Description		

To configure Bluetooth setting with Configuration Tool Utility.

(Bluetooth is Optional Interface. For more information, Please contact your supplier)

1. Click Get Bluetooth Information.

Bluetooth Settings

Bluetooth Information

Get Bluetooth Information

BT Address :

Bluetooth device name(Bluetooth ID)

Set Bluetooth Information

PIN Code Information

PIN Code :

Save Bluetooth PIN Code

Discoverable Mode Information

ON OFF

Save Discoverable Mode

iOS auto connection Settings

Enable auto connection

Disable auto connection

BLE(Bluetooth Low Energy) Settings

Enable BLE

Disable BLE

Numeric Comparison Settings

Enable

Disable

2. Update or check your settings

Bluetooth Settings

Bluetooth Information

Get Bluetooth Information

BT Address : 88:6b:0f:31:b2:5b

Bluetooth device name(Bluetooth ID)

SW_B25B

Set Bluetooth Information

PIN Code Information

PIN Code : ?

Save Bluetooth PIN Code

Discoverable Mode Information

ON OFF

Save Discoverable Mode

iOS auto connection Settings

Enable auto connection

Disable auto connection

BLE(Bluetooth Low Energy) Settings

Enable BLE

Disable BLE

Numeric Comparison Settings

Enable

Disable

3. Click button you need to set to finish.

Use the following table to Bluetooth setting

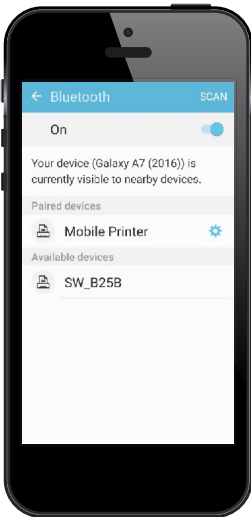
Name	Description
BT Address	The MAC address for Bluetooth Module.
Bluetooth device name (Bluetooth ID)	The Name of Bluetooth Printer to pair.
PIN Code	Pin code to pair (Default : 0000 or 1234)
iOS auto connection Settings	Allowing iOS devices to automatically reconnect the printer.

NOTE Printers with only BT 4.2 support this function.

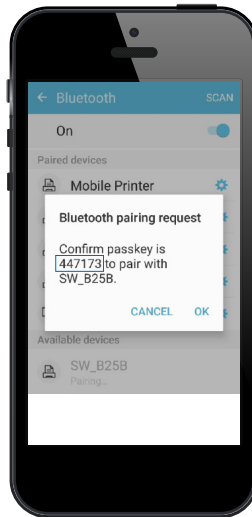
1. Click the 'Enable' tab on the Numeric Comparison Settings.



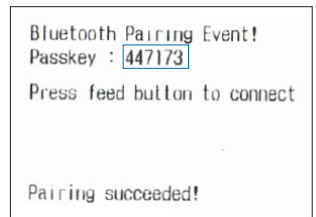
2. Reboot a printer.
3. Click the Bluetooth device name on the PC or mobile Bluetooth setting screen.
4. The passkey(6 digits) will be displayed on the printer and the device.
(If a printer doesn't have a LCD, the passkey will be printed out.)
5. Please press the Feed button on the printer & press 'Pairing' button on the PC or mobile device.
(There is a pairing time out 10 seconds. Make sure to press the feed button on the printer in 10 seconds.)
6. You get a 'Pairing Success' printout after pairing job.



MOBILE



MOBILE



PRINTER

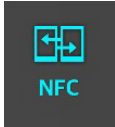
Please make sure to have the same passkeys.

NOTE A display type can be slightly different depending on device models.

1. Turn on the NFC function on your mobile devices.

(Choose either NFC P2P mode or standard mode / Connection is not available with NFC card mode.)

NOTE A display type can be slightly different depending on device models.



2. If you take your mobile device close to the printer NFC tag, a mobile application will be automatically executed.

NOTE If a mobile application is not installed on mobile devices, NFC function is not available.

Go to CD -> NFCPrint_Sample to install the application.

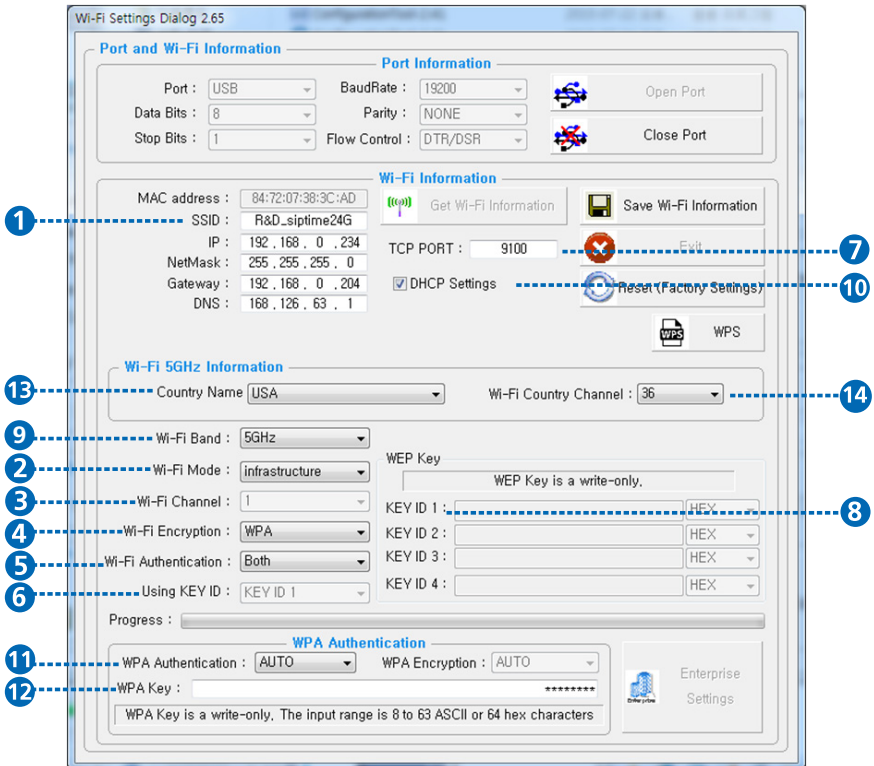
To configure Wireless LAN settings with Configuration Tool Utility.

(Wi-Fi is Optional Interface. For more information, Please contact your supplier.)

1. Click Start Wi-Fi Settings.



2. Select the connection in the Port Information.
3. Click Open port.
4. Click Get Wi-Fi Information.
5. Update or check your settings.
6. Click Save Wi-Fi Information to finish.



Use the following table to Wireless LAN setting.

Number	Name	Description
1	SSID	The Network name to connect.
2	Wi-Fi Mode	Set the mode of the device to adhoc, infrastructure or SoftAP.
3	Wi-Fi Channel	Set the channel to use.
4	Wi-Fi Encryption	Set the type of Encryption to none, WEP-64, WEP-128 or WPA.
5	Wi-Fi Authentication	Set the type of Authentication to open system, shared key or both
6	Using KEY ID	Set the number of KEY to use from No. 1 to No. 4.
7	TCP Port	Set the port to use.
8	KEY ID 1 ~4	Enter value for up to 4 KEYs to ASCII or HEX
9	WiFi Band	Choose 2.4GHz or 5GHz.
10	DHCP Settings	Set the LPD to use.
11	WPA Authentication	Set the queue name to use with LPD Enable
12	WPA Encryption	Set the type of Authentication to WPA-PSK, WPA2-PSK, Auto (LK-P12,P20II,P30II,P41,P43,P22 is fixed to AUTO)
13	Country Name	Channel values depend on countries.
14	Country Channel	Available channels for the country chosen

7. To Set Wi-Fi printer correctly, you need to check the AP's or Router's setting in advance. Ex) D-Link Router (Model: DIR-820L)

WIRELESS

Use this section to configure the wireless settings for your D-Link Router. Please note that changes made on this section may also need to be duplicated on your Wireless Client.

WIRELESS NETWORK SETTINGS

Wireless Band : 2.4GHz Band
Enable Wireless: Always
Wireless Network Name: R&D_dlink24G (Also called the SSID) ①
802.11 Mode: Mixed 802.11n, 802.11g and 802.11b
Enable Auto Channel Scan:
Wireless Channel: 2.437 GHz - CH 6 ③
Transmission Rate : Best (automatic)
Channel Width: Auto 20/40 MHz
Visibility Status: Visible Invisible

WIRELESS SECURITY MODE

To protect your privacy you can configure wireless security features. This device supports three wireless security modes, including WEP, WPA-Personal, and WPA-Enterprise. WEP is the original wireless encryption standard. WPA provides a higher level of security. WPA-Personal does not require an authentication server. The WPA-Enterprise option requires an external RADIUS server.

Security Mode: WPA-Personal ④

WPA

Use **WPA** or **WPA2** mode to achieve a balance of strong security and best compatibility. This mode uses WPA for legacy clients while maintaining higher security with stations that are WPA2 capable. Also the strongest cipher that the client supports will be used. For best security, use **WPA2 Only** mode. This mode uses AES(CCMP) cipher and legacy stations are not allowed access with WPA security. For maximum compatibility, use **WPA Only**. This mode uses TKIP cipher. Some gaming and legacy devices work only in this mode.

To achieve better wireless performance use **WPA2 Only** security mode (or in other words AES cipher).

WPA Mode: Auto (WPA or WPA2) ⑫
Cipher Type: TKIP and AES ⑬
Group Key Update Interval: 3600 (seconds)

PRE-SHARED KEY

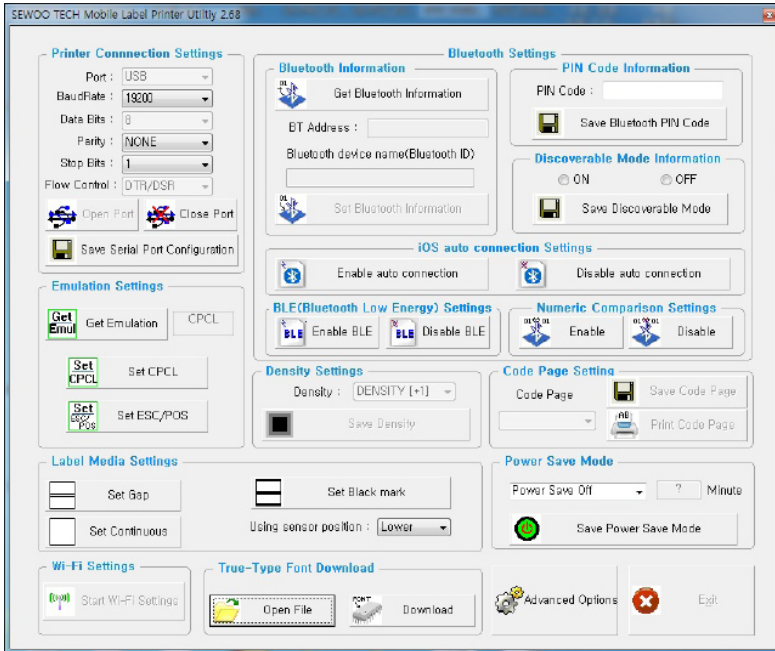
Enter an 8- to 63-character alphanumeric pass-phrase. For good security it should be of ample length and should not be a commonly known phrase.

Pre-Shared Key: ⑭

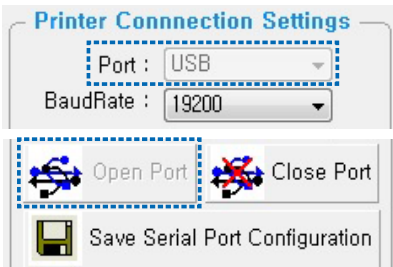
NOTE Use of TrueType or other purchased fonts require licensing and is the responsibility of the user to acquire permission for use in the printer.

True Type Font Download

1. Execute Configuration Tool.exe file.

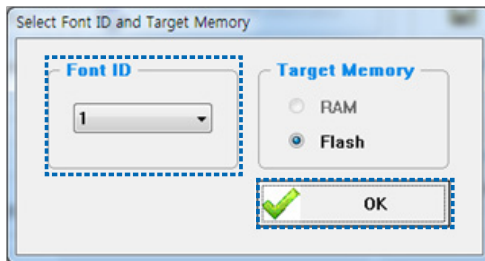
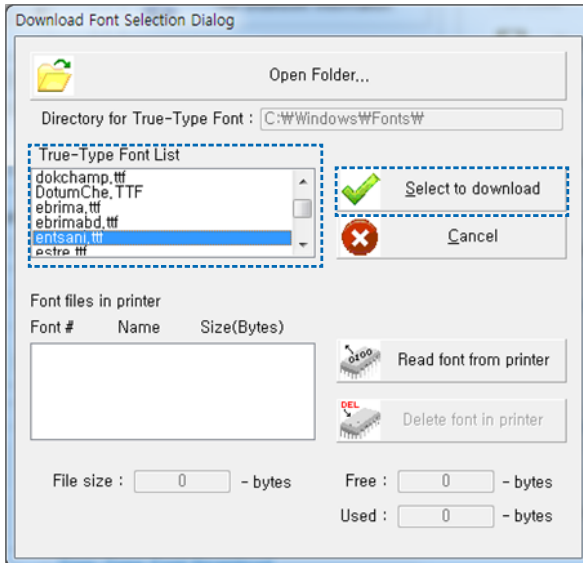


2. After changing Port to 'USB', press Open Port.
 - When True-Type Font Download appears, press Open File.



3. Choose a font and click 'Select to download'.

-Font ID: If you want more than 1 font type, please save a font and increase Font ID each time.

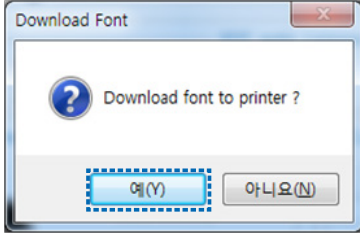


Change the Font ID if you save more than one font.

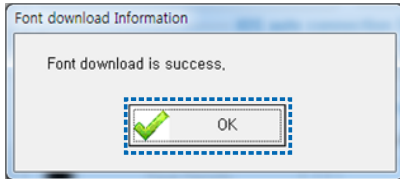
4. Press Download button.



- 5. If you would like to save a converted font(.tfd), please enter a file name and click Save button.
 - Purpose: To use the same font on different devices
 - If you do not want to save, press Cancel button.



- 6. After downloading, a printer will be automatically ended.



True Type Font Printing

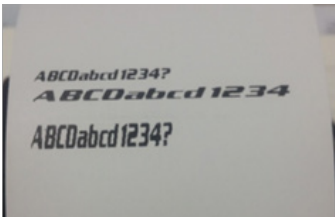
1. ZPL Printing Format Example:

```
^XA                               Font Name Printing Data
^FT10,10^A@N,24,24,entsani^FDABCDabcd1234?^FS
^FT10,50^A@N,24,48,entsani^FDABCDabcd1234?^FS
^FT10,120^A@N,48,24,entsani^FDABCDabcd1234?^FS
^PQ1
^XZ
```

2. CPCL Printing Format Example

```
! 0 200 200 400 1 Font Name Printing Data
SCALE-TEXT entsani.tfd 24 24 0 6 ABCDabcd1234?
SCALE-TEXT entsani.tfd 48 24 0 31 ABCDabcd1234?
SCALE-TEXT entsani.tfd 24 48 0 64 ABCDabcd1234?
PRINT
```

3. Actual printout





J. STEPHEN Co., Ltd.

28-6, Gajangsaneopdong-ro, Osan-si, Gyeonggi-do, 18103, Republic of Korea

TEL : +82-31-8077-5000 FAX : +82-31-624-5310

www.miniprinter.com